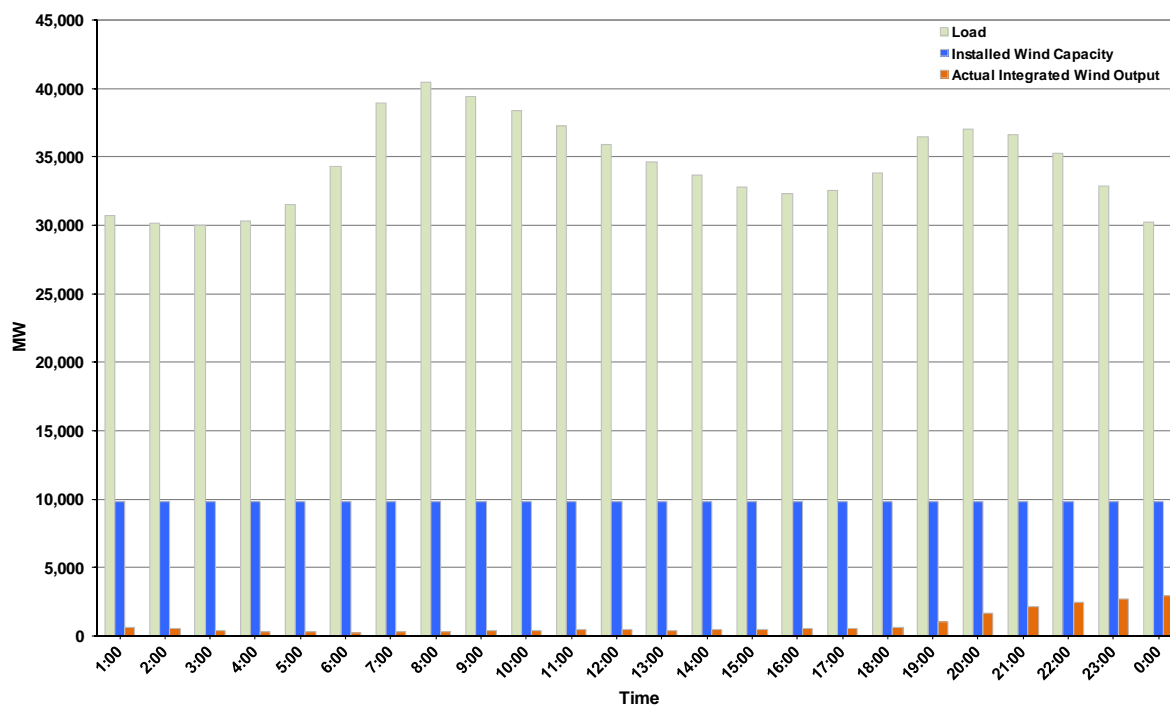




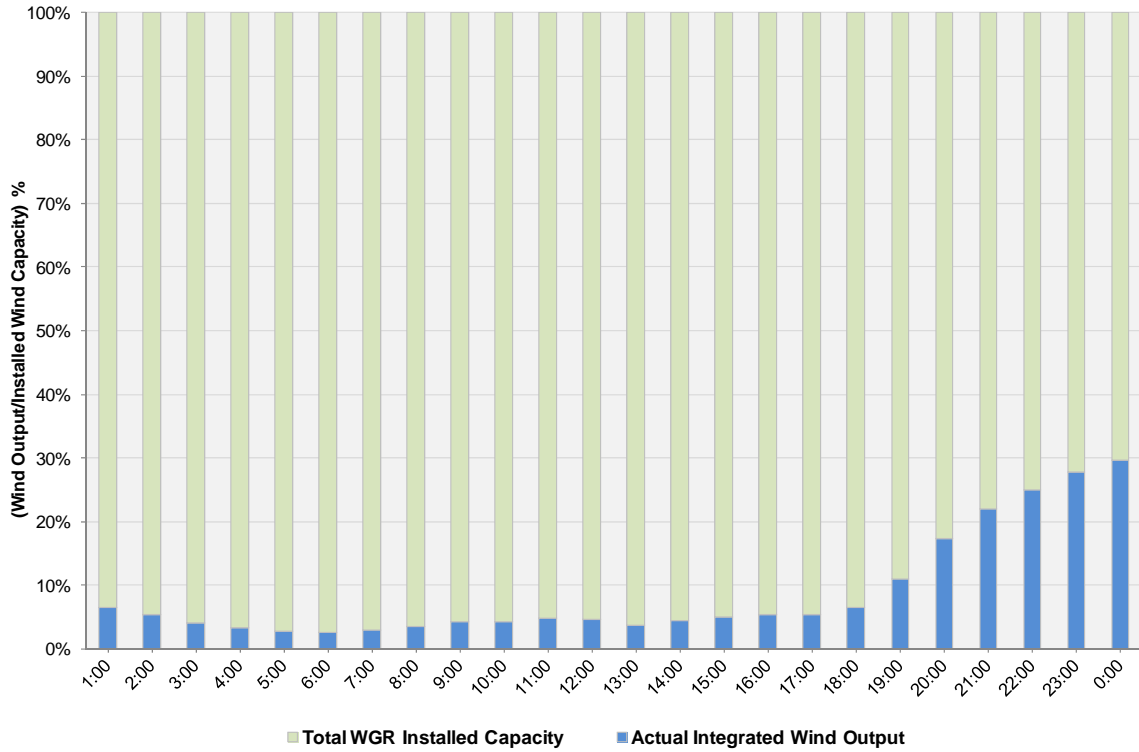
## ERCOT Grid Operations Wind Integration Report: 02/06/12

Peak Load	<b>40,442 MW</b>
Load Peak Hour (HE)	<b>08</b>
Wind over Peak	<b>336 MW</b>
Wind Record 10/07/11	<b>7,400 MW</b>
Max Wind Value	<b>3,166 MW</b>
Wind Peak Time	<b>23:59</b>
Wind Integration %	<b>10.82%</b>

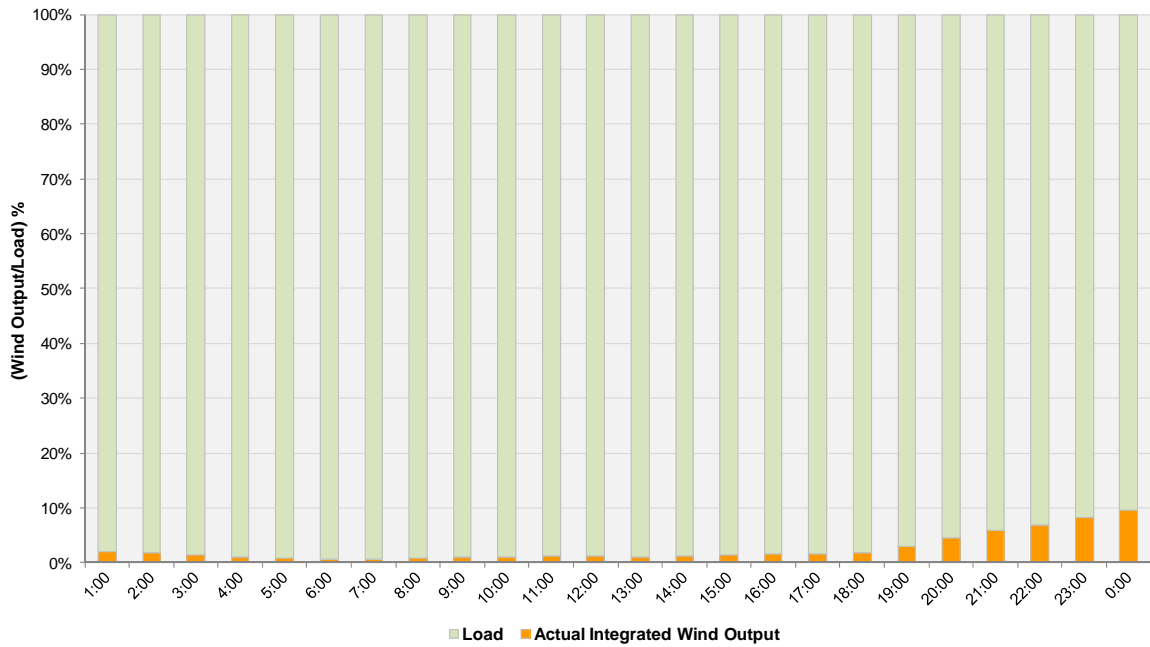
**Hourly Average Actual Load vs. Actual Wind Output  
02-06-2012**



**Actual Wind Output as a Percentage of the Total Installed Wind Capacity**  
**02-06-2012**



**Actual Wind Output as a Percentage of the ERCOT Load**  
**02-06-2012**



ERCOT Load vs. Actual Wind Output 1/30/2012 - 2/6/2012

